

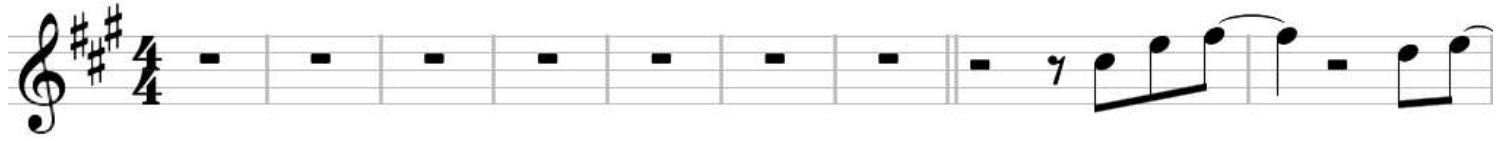
Stand By Me

John Lennon

Tuning: E A D G B E

Intro
♩ = 104

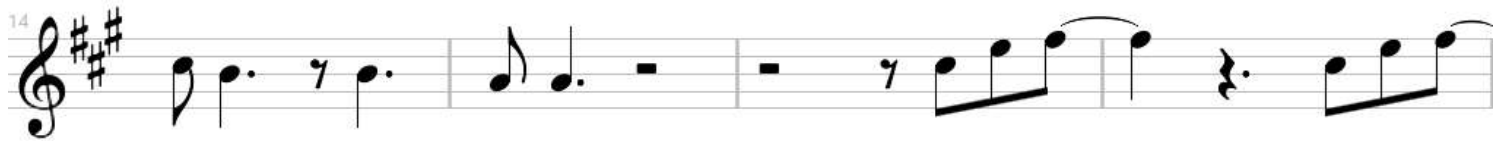
Verse 1



~~When~~ the night has come



And the land is dark And the moon is the



on- ly light we see No I won't be af- raid



No I won't be af- raid Just as long as you stand, stand

14 ♪ ♯

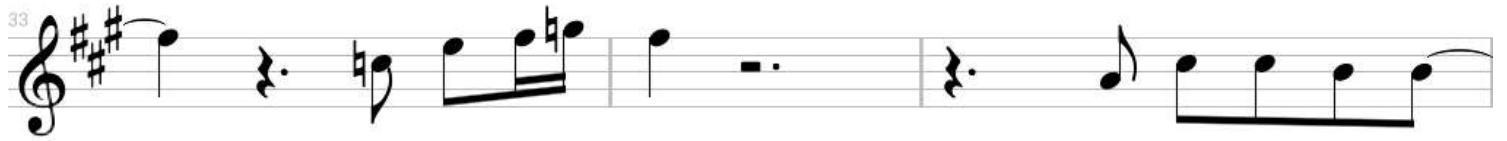
Verse 2



by me And dar- ling, dar- ling stand by me Oh, now, now, stand by



me Stand by me, stand by me If the sky



that we look u- pon Should tumble and



fall And the moun- tain should crumble to the sea

Verse 3



I won't cry, I won't cry No I won't shed a



tear Just as long as you stand, stand by me And dar- ling, dar- ling



stand by me Oh, now, now, stand by me Stand by me,

Solo

54

standby me, stand by me

63

When

Outro

72

e- ver you're in trouble won't you stand by me Oh, now, now,

75

stand by me Stand by me, stand by me, stand

79

by me Dar- ling, dar- ling stand by me Stand by me

Fade Out

83

Oh stand by me, stand by me, stand by me stand

87



by

me