

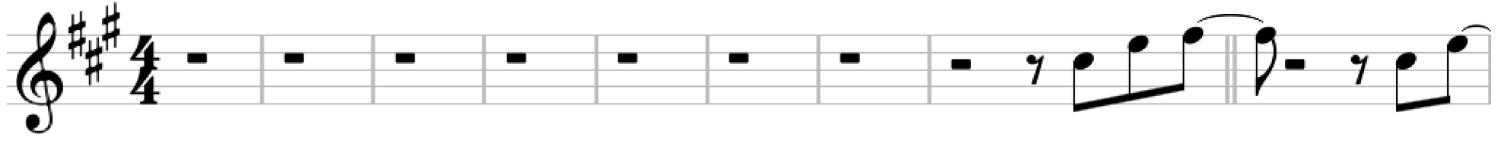
# Stand By Me

Ben E. King

Tuning: E A D G B E

Intro  
♩ = 120

Verse 1



When the night has come



And the land is dark And the moon



is the only light we'll see No, I won't



be a fraid Oh, I won't be a-



fraid Just as long as you stand Stand by me So

Chorus



dar- ling dar- ling stand by me Oh oh stand by me



Oh oh stand standby me standby me If the sky

Verse 2



that we look u- pon Should tum- ble and fall Or the moun-



tain Should crum- ble to the sea I won't cry



I won't cry No I won't shed a tear Just as long

Chorus



as you stand Standby me Oh dar- ling dar- ling stand by

50

me Oh oh stand by me Stand by me standby me

Strings Solo

55

standby me

Chorus

67

So Dar- ling dar- ling stand by

74

me Oh oh stand by me Oh stand stand

78

by me stand by me Whe ne- ver you- 're in trou- ble Won't you

81

stand by me oh oh stand by me Oh oh

Outro

85

stand stand by me stand by me