

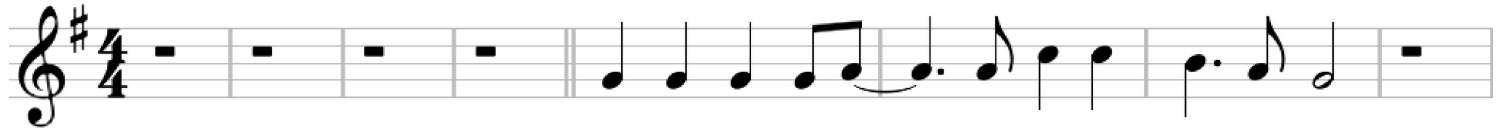
# Im A Believer

The Monkees

Tuning: E A D G B E

**Intro**  
♩ = 160

**Verse 1**



*f* thought love was on- ly true in fai- ry tales

**Pre-Chorus**



Meant for some- one else but not for me Ah love was out to get




me Tu- du- dum- du- dum That's the way it seemed Tu- du- dum- du-



dum Dis- ap- point- ment haunt- ed all my dreams And Then I saw her face,

**Chorus**



now I'm a be- liev- er Not a trace,

Interlude

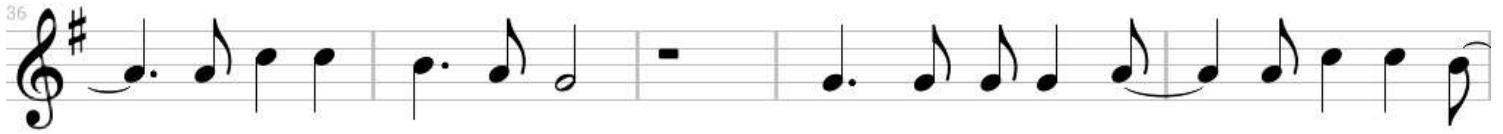


of doubt in my mind I'm in love, I'm a be-

Verse 2



liev- er I could-n't leave her if I tried I thought love was more



or less, a giv- in' thing Seems the more I gave the less I got

Pre-Chorus

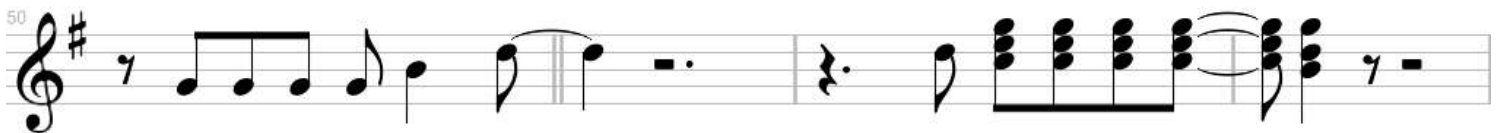


Whats the use in try- in' Tu- du- dum- du- dum All you get is pain



Tu- du- dum- du- dum When I need- ed sun- shine I got rain

Chorus



And Then I saw her face, now I'm a be- liev- er

54

Not a trace, of doubt in my mind I'm in  
**Interlude**

59

love, I'm a be- liev- er I could-n't leave her if I tried

**Solo**

**Pre-Chorus**

65

Ah love was out to get

74

me Tu- du- dum- du- dum That's the way it seemed Tu- du- dum- du-

77

dum Dis- ap- point- ment haunt- ed all my dreams And Then I saw her face,

**Chorus**

81

now I'm a be- liev- er Not a trace,

Interlude

of doubt in my mind I'm in love. I'm a be-

Outro

liev- er I could-n't leave her if I tried. Yes I saw her face,

now I'm a be- liev- er Not a trace of doubt in my

mind. Then I'm a be- liev- er Yeah, yeah, yeah, yeah, yeah, yeah, ye

Then I'm a be- liev- er