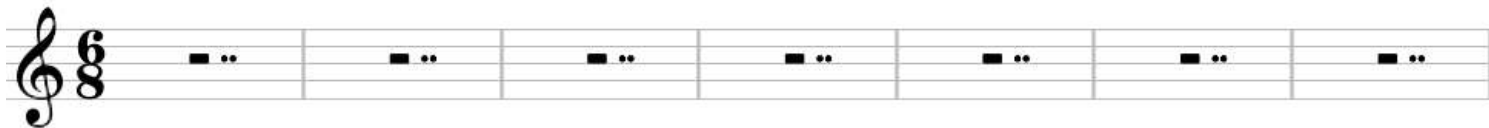


House Of The Rising Sun

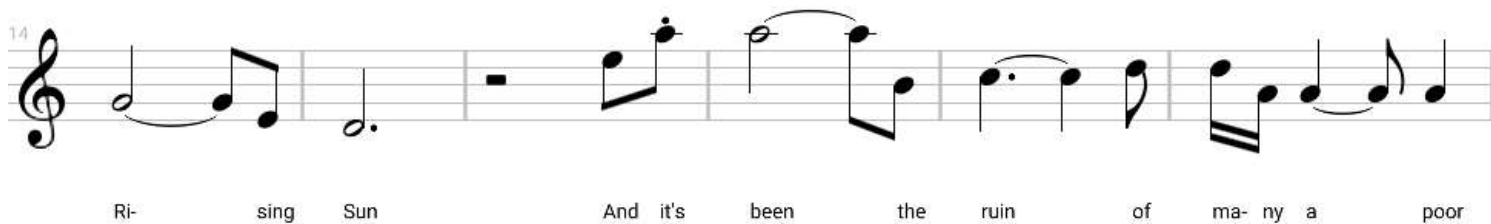
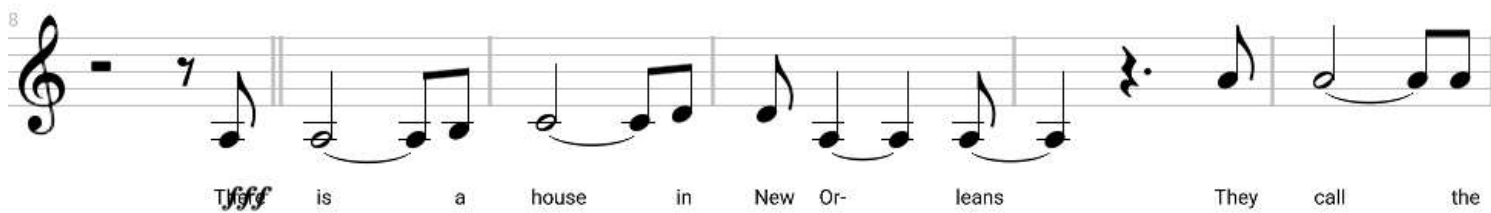
The Animals

Tuning: E A D G B E

Intro
♩ = 118



Verse 1
♩ = 115



Musical staff 34 in treble clef, 7/8 time signature. It contains two measures of music with lyrics underneath.

She sewed my new blue jeans My father was a

Interlude

Musical staff 41 in treble clef, 7/8 time signature. It contains two measures of music with lyrics underneath.

gam-blin' man Down in New Or-leans

Verse 3

Musical staff 48 in treble clef, 7/8 time signature. It contains two measures of music with lyrics underneath.

Now the on-ly thing a

Musical staff 55 in treble clef, 7/8 time signature. It contains two measures of music with lyrics underneath. A tempo marking $\text{♩} = 111$ is placed below the staff.

gam- bler needs is a suit- case and a trunk And the on- ly

Interlude

Musical staff 62 in treble clef, 7/8 time signature. It contains two measures of music with lyrics underneath.

time he's sa- tis- fied is when he's on a drunk

$\text{♩} = 115$

Solo

Musical staff 69 in treble clef, 7/8 time signature. It contains two measures of music with lyrics underneath.

76

83

Interlude

90

Oh

Verse 4
♩ = 111

97

mo- ther tell your child- ren Not to do what I have done

104

Spend your lives in sin and mi- se- ry In the House of the

Interlude

110

♩ = 115

Ri- sing Sun

Verse 5



Well I got one foot on the plat- form The other foot



on the train I'm go- ing back to New Or- leans To wear that

Interlude



ball and chain

Verse 6



Well, there is a house in New Or- leans They call the



Ri- sing Sun And it's been the ruin of ma- ny a poor

Solo



boy And God I kn- ow I'm one

159

♩ = 111

Outro
♩ = 110

♩ = 107

A musical staff in treble clef containing seven measures. Each measure contains a dotted quarter note on the second line of the staff. Above the first measure is the tempo marking '♩ = 111'. Above the second measure is the tempo marking '♩ = 110' with the word 'Outro' above it. Above the seventh measure is the tempo marking '♩ = 107'. A double bar line is located between the fourth and fifth measures.

166

♩ = 102

♩ = 99

♩ = 96

♩ = 90

♩ = 93

A musical staff in treble clef containing seven measures. Each measure contains a dotted quarter note on the second line of the staff. Above the first measure is the tempo marking '♩ = 102'. Above the second measure is the tempo marking '♩ = 99'. Above the third measure is the tempo marking '♩ = 96'. Above the fourth measure is the tempo marking '♩ = 90'. Above the seventh measure is the tempo marking '♩ = 93'.

173

A musical staff in treble clef containing two measures. Each measure contains a dotted quarter note on the second line of the staff. The staff ends with a double bar line.